

# High Voltage Switch Company - High Voltage Electronic Components



## MZD81-40.5 Indoor High Voltage Ground Switch

### **About the Product:**

MZD81-40.5/31.5 Indoor High Voltage Ground Switch (hereinafter refers to ground switch) is an advanced product with high technical parameters developed by Xi'an High Voltage Electrical Appliances Research Institute. Through comprehensive assessment, its performance meets the national standards GB1985 《AC High Voltage Isolated Switch and Ground Switch》. It is applied to 40.5kV AC 50Hz power system and can be used with KYN□-45 and many other models high voltage switch. It also can be used as ground protection for high voltage electrical equipment maintenance.

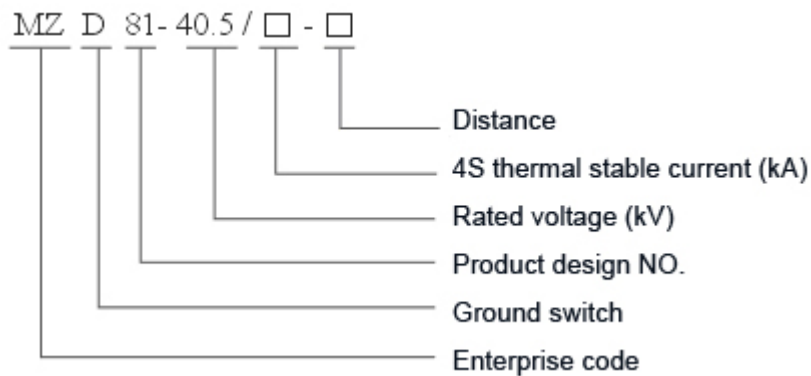
### **Chief Features and Terms of Use**

1. Advanced design, indoor load switch
2. Simple structure, easy to install and adjust
3. Rapid part and close speed
4. Altitude: Lower than 1000m
5. Environmental temperature: maximum temperature +40℃ , minimum temperature -10℃
6. Earthquake intensity smaller than 8 degree.
7. Away from flood, explosion hazard, serious dust, chemical corrosion and dramatic shake.

### **Order Information**

1. please state product model, rated voltage, thermal stable current and inter-distance.
2. If the auxiliary axis actuator is needed please annotate the left one or the right one referring to the above diagram.
3. If sensor charged display device is needed please point out the type.  
Special requirements please consult with our company.

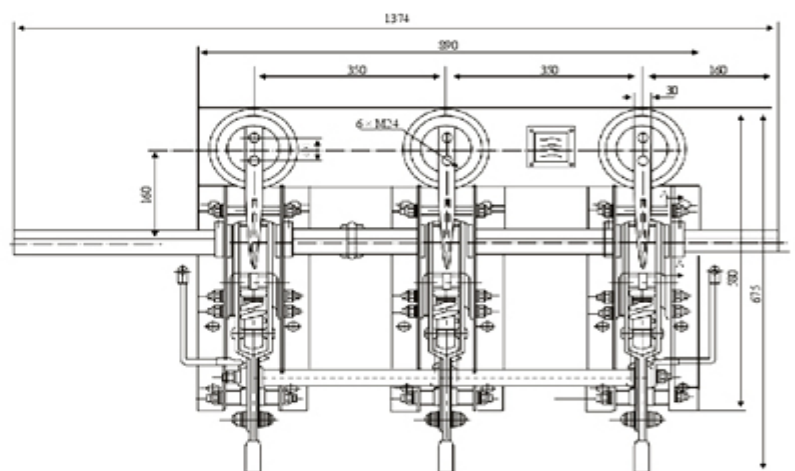
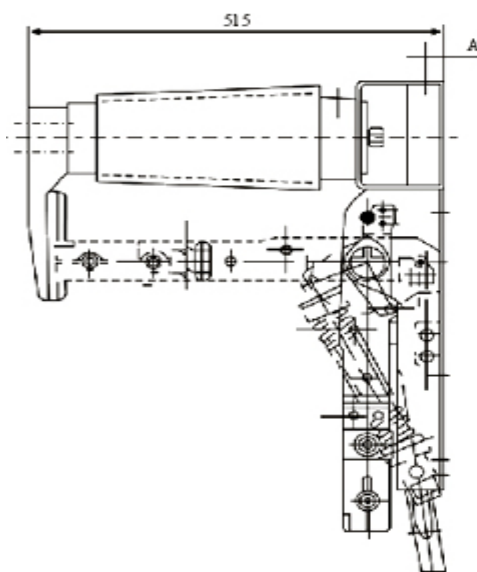
## Model Meaning

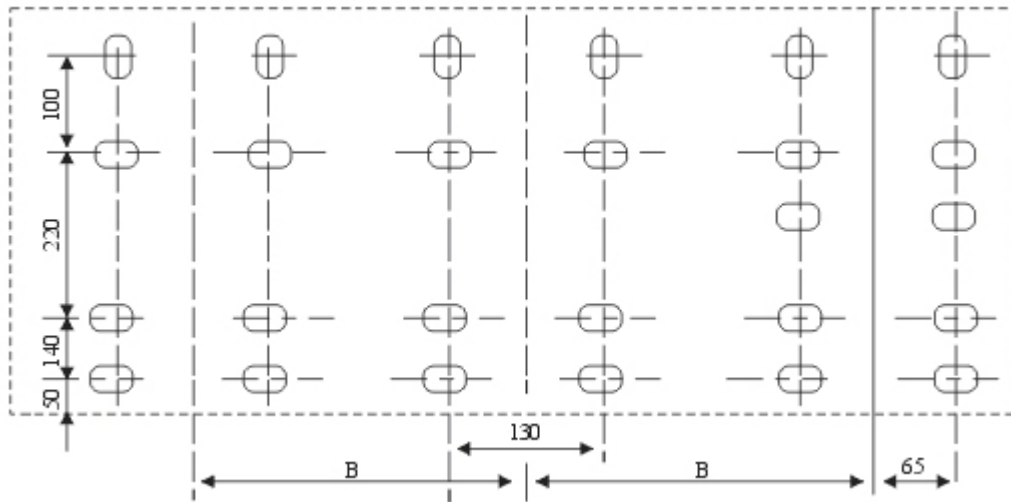


## Main Technical Parameters

Item	Unit	Data		
rated voltage	KV	12		
maximum voltage	KV	40		
thermal stable voltage tolerance	KA	4		
thermal stable current tolerance time	S	100		
short circuit closing current	KA			
dynamic stable current	KA			
inter-electrode central distance	mm			
rated insulation level	rated short term work frequency voltage tolerance	KV	towards the ground and inter-electrode	95
	rated lightning impact voltage tolerance		185	

## Contour and Installation Dimensions of MZD81-40.5 Indoor High Voltage Ground Switch





inter-electrode distance B	H	A (installation hole at the back of the steel channel)
300	790	3holes-15*400*14(diameter)
350	890	3holes-15*400*14 (diameter)
400	990	3holes-15*400*14(diameter)