

High Voltage Switch Company - High Voltage Electronic Components



MZD66-12 Indoor High Voltage Ground Switch

About the Product:

MZD66-12/40 (original model is JN15-12/40 in order to distinguish it from the mass market our company renamed it as MZD66-12/40) Indoor High Voltage Ground Switch is a new type of international advanced ground switch of our company which is designed and developed on the basis of ESI ground switch. It is of combination structure. Its performance meets GB1985-89 《AC High Voltage Isolated Switch and Ground Switch》 and EC129 standards. It is applied to 3~10 kV three-phase AC 50(60) Hz power system. It has certain open and close ability to protect the other electrical devices in the switch equipment from damage. It can be used with various high voltage power boxes as the ground protection for the maintenance of high voltage electrical devices.

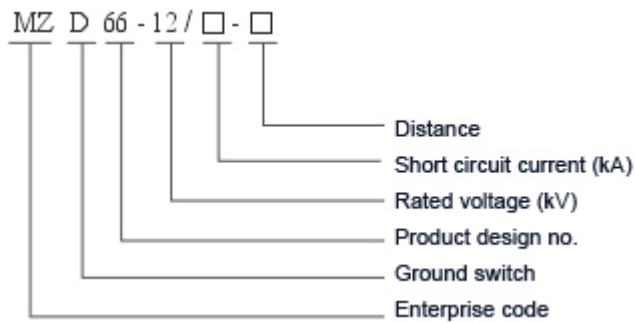
Chief Features and Terms of Use

1. Advanced design, indoor load switch
2. Simple structure, easy to install and adjust
3. Rapid part and close speed
4. Environmental temperature: maximum temperature +40 , minimum temperature -10
5. Altitude: Lower than 1000m
6. Humidity: daily average relative humidity <95%, monthly average relative humidity < 90%
7. Earthquake intensity smaller than 8 degree.
8. Contamination grade: grade

Order Information

1. please state product model, distance, with or without power supply display device (displayer model) when make a ground switch order.
2. does soft connect length need to be extended. (Regular L=240)
3. special requirements please consult with our company.

Model Meaning



Main Technical Parameters

Item	Unit	Data		
rated voltage	KV	12		
rated short term current tolerance (thermal stable)	KV	40		
rated short circuit duration time	S	4		
rated short circuit closing current	KA	100		
rated peak value current tolerance (dynamic stable)	KA	100		
rated insulation level	rated short term work frequency voltage tolerance	KV	opposite and alternated	42
	rated lightning impact voltage tolerance			75
mechanical life span	times	2000		

Contour MZD66-12 Indoor High Voltage Ground Switch

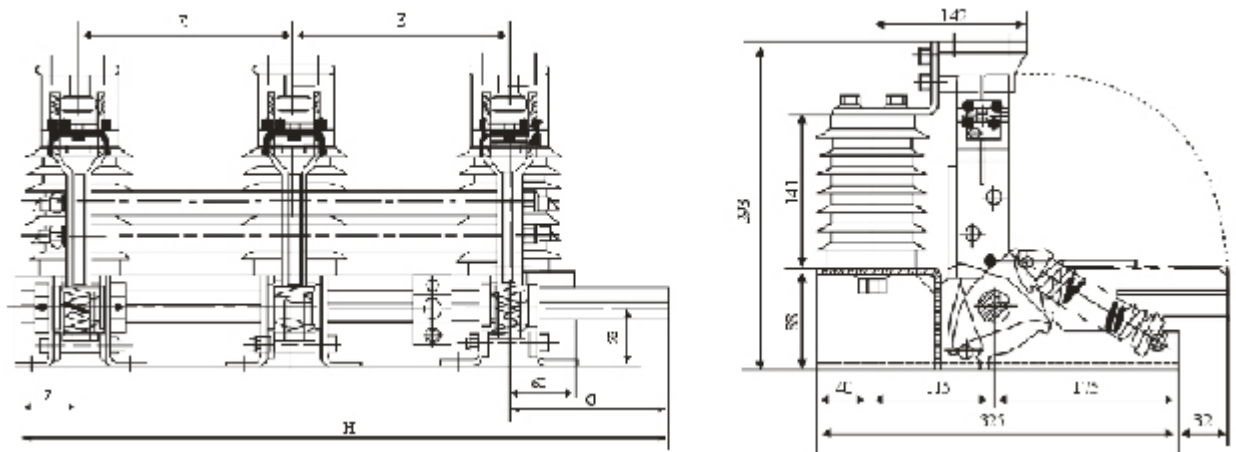


Diagram of copper-tube row terminal

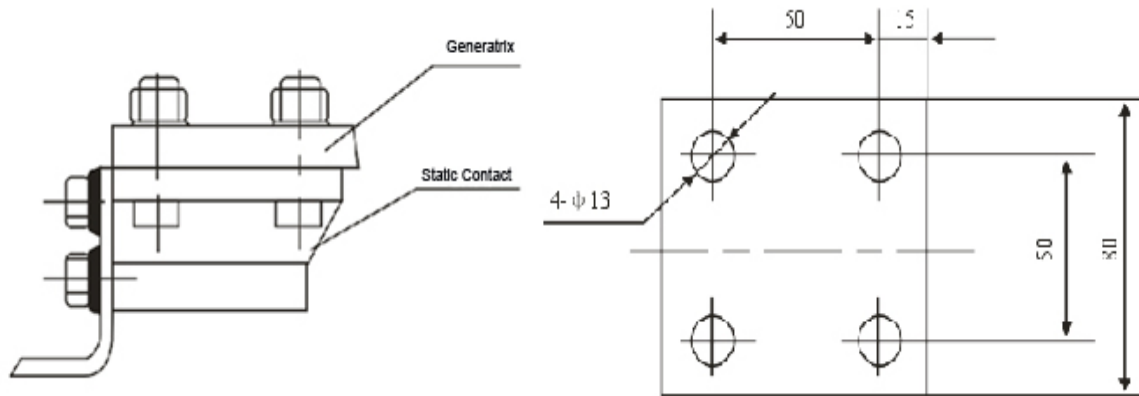
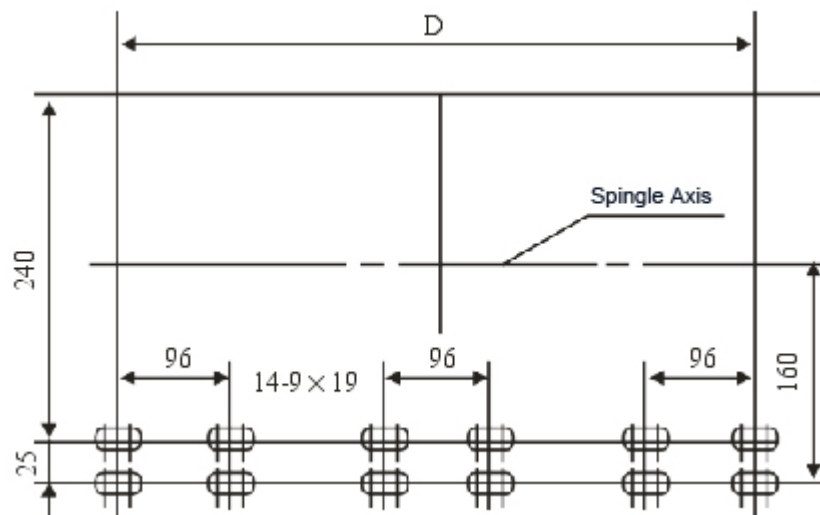


Diagram of whole installation



Product Model	E	F	G	H	D
MZD66-12/40-210	210	50	185	655	516
MZD66-12/40-220	220	50	185	675	536
MZD66-12/40-230	230	50	85	695	556
MZD66-12/40-250	250	50	185	735	596
MZD66-12/40-275	275	50	210	810	646