

High Voltage Switch Company - High Voltage Electronic Components



MZF62-12D/T630-20 Indoor High Voltage Vacuum Load Switch

About the Product:

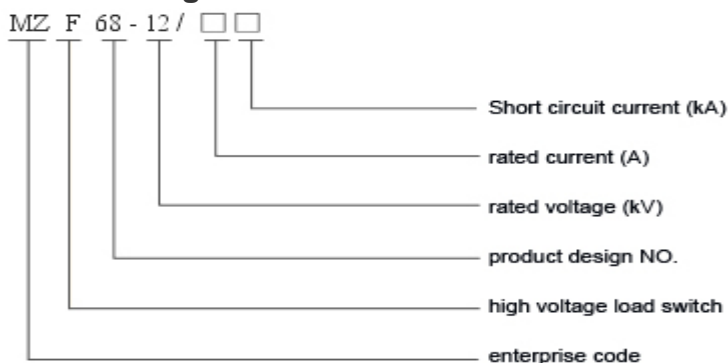
MZF62-12D/T630-20 Indoor High Voltage Vacuum Load Switch is applied to the power system of 50Hz three-phase AC 12kV rated voltage. It is capable of opening and closing, loading, breaking load and overloading current. It also can break and close the unloaded lone wires, transformers and capacitors.

MZF62-12D/T630-20 Indoor High Voltage Vacuum Load Switch-Fuse Combined Electrical Appliance is composed of this load switch and fuse. Besides the above functions it also has protective function.

working and Environmental Conditions

1. Environmental temperature: maximum temperature +40 , minimum temperature -25
2. Altitude: Lower than 1000m
3. Environmental humidity:
daily average relative humidity: $\leq 95\%$
monthly relative humidity: $\leq 90\%$
4. no conductive dust, corrosion gas or steam.
5. no fire or explosion danger
6. No dramatic shock; gradient $< 3^\circ$

Model Meaning



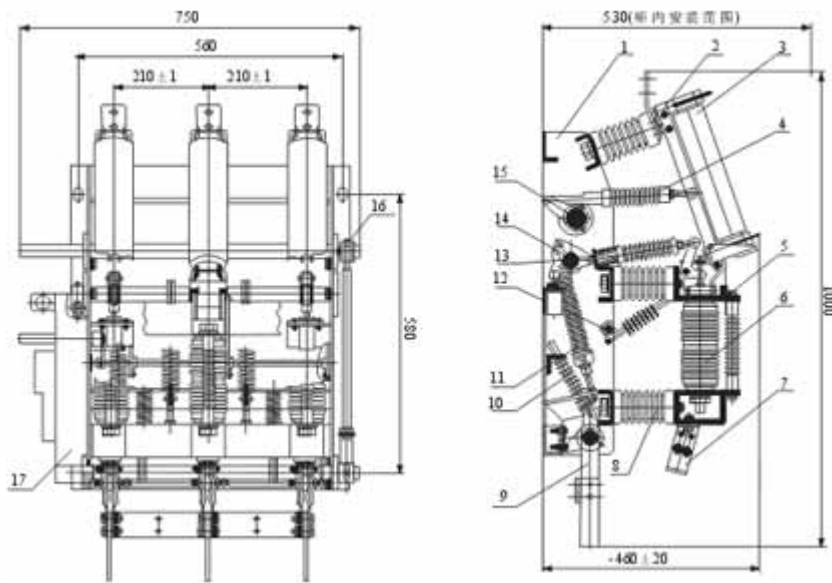
main technical parameters of the load switch

order	item	unit	data
1	rated voltage	kV	12
2	rated frequency	Hz	50
3	rated current	A	630
4	rated load breaking current	A	630
5	rated closed-loop breaking current	A	630
6	5%rated load breaking current	A	31.5
7	rated electric charged current	A	10
8	rated unloaded transformer capacity	KV/A	1250
9	1min working frequency voltage tolerance(vacuum fracture, opposite direction, towards the ground, isolated fracture)	KV	42/48
10	lightening impact voltage tolerance: (vacuum fracture, opposite direction, towards the ground, isolated fracture)	KV	75/85
11	rated short term current tolerance (thermal stable)	KA/S	20/4
12	rated peak value current tolerance (dynamic stable)	KA	5
13	rated short circuit closing current	KA	50
14	mechanical life span	times	10000
15	vacuum arc chamber allowed attrition thickness	mm	2
16	operation voltage of power supply AC/DC	V	110 、 220

Combined electrical appliance technical parameters

order	item	unit	data
1	rated voltage	KV	12
2	rated frequency	HZ	50
3	maximum rated current of the fuse	A	125
4	stable breaking alternating current	A	3150
5	time of switch opening caused by the fuse	Ms	40±5
6	rated short circuit breaking current (RMS)	KA	31.5
7	rated short circuit breaking current (peak value)	KA	50
8	1min working frequency voltage tolerance(vacuum fracture, opposite direction, towards the ground, isolated fracture)	KV	42/48
9	lightening impact voltage tolerance: (vacuum fracture, opposite direction, towards the ground, isolated fracture)	KV	75/85
10	Fuse impact energy output	J	2-5

Contour and Installation Dimensions



- 1 framework 2 isolated knife
- 3 fuse 4 insulated bar
- 5 upper support 6 vacuum arc chamber
- 7 static contact 8 insulator
- 9 grounded knife 10 ground spring
- 11 switch spring 12 release transmission gear
- 13 insulated bar 14 spindle
- 15 axis 16 regulation bar
- 17 spring actuator